

Newsletter

Official Newsletter of Coffey County 4-H



Discovery Days in Manhattan

June 5th - 7th

Youth ages 13-18 before
January 1, 2024 are invited
to register. For more
information visit here:
<https://bit.ly/4ci6Kml>



County Fair: Assistant Fair Superintendents

We are looking for 4-H Junior
Leaders (13 years or older) to be
assistant Fair Superintendents.

If you are interested, please
contact the Extension Office.
This would look great in your
project record books!



Table of Contents

[Discovery Days](#)

PAGE 1

[Walk Kansas](#)

PAGE 2

[Add or Drop Deadline](#)

PAGE 2

[Livestock Nominations](#)

PAGE 3

[Regional Club Day Results](#)

PAGE 4

[Fair Preparation Information](#)

PAGE 5

[Fair Information Cont.](#)

PAGE 6



HORSE ID REMINDERS

HORSES: 4-H Horse ID paper's with picture are due in the Extension Office by June 1st for all horses to be shown. Anyone planning to be in the 3 year old Snaffle Bit Project at State Fair must submit a nomination form by June 1st with a \$10.00 nomination fee.

Add or Drop Project Deadline May 1st

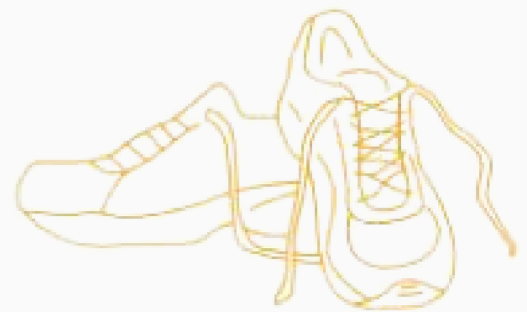
May 1st is the **LAST** day to add or drop projects! Remember to double check your project enrollments before thinking about fair exhibits! If you try to exhibit a project at the fair that you are not enrolled in, your exhibit will be moved to Open class. Parents may add or drop projects for their 4-Her's by emailing a request to Hali or Jill.

halib@ksu.edu

jbarnhardt@ksu.edu

Walk Kansas: March 31st through May 25th

Registration opened March 4th for Walk Kansas, a team-based challenge that encourages people to walk, jog, run, bike, swim or do whatever activity they prefer to live more healthfully. Enlist some friends to complete your team of 4-6, or sign up as an individual and we will assign you to a team. Registration is open on walkkansasonline.org or register through the Extension Office. Fee is \$10/person for adults, **SCHOOL AGED youth (18 and younger) can participate for FREE!**, with the option to purchase apparel at an additional cost. Contact the office for more details.



WALK KANSAS



State Livestock Nomination Season:

The 2024 State Livestock Nomination Information is now available! DNA envelope orders are also being accepted and filled. Any market animal or commercial breeding female that a youth would like to show at the Kansas State Fair The Grand Drive or Kansas Junior Livestock Show.

Nomination Deadlines:

May 1 - Market Beef

June 15 - Small Livestock and Commercial Heifers

DNA Envelope Order Deadlines:

April 20 - Market Beef

June 5 - Small Livestock and Commercial Heifers

For more information visit the Nomination Information page.

<https://bit.ly/43pzqFS>

Please note that families are responsible for ordering their own DNA envelopes. Old envelopes will not be accepted and the Extension Office does not provide them. Beef envelopes need to be ordered by April 20th. Small animal envelopes must be ordered by June 5th.

4-H Shutterbug Photography Workshop

Saturday, May 4th in Garden City
at the Lee Richardson Zoo

Saturday, April 27th in Wichita
at the Botanica Gardens

4-H photography members and their family members interested in learning more about their camera, smartphone and photography skills should attend this workshop! Plan to attend and get a head start on your photography project.



Kansas State Fair Livestock Requirements:

Individuals wanting to show at the Kansas State Fair must meet county and state deadlines and regulations. 4-Her's must qualify at approved county and invitational 4-H shows and events and meet State Fair guidelines and qualifications. 4-Hers planning to show at KSF or KJLS are encouraged to go to the **KSU Youth Livestock page** <https://bit.ly/3vijZmd> to find the latest information pertaining to nomination and entry of animals into these shows. Please keep this information throughout the 4-H year to help answer any questions. As always please feel free to call the Extension Office for any questions, comments, or concerns.



Regional Club Day Results

Name	Event	County	Placing
Tip Top 4-H Club	Dance	Coffey	Reserve Champion
Byrnna Wilson	Interview	Coffey	Champion
Cyrus Graf	Junior Reading	Coffey	Champion
Jesse Durst	Intermeidate Reading	Coffey	Champion
Sage Bell	Senior Reading	Coffey	Champion
Raleigh Morray	Junior Project Talk	Coffey	Blue
Caleb Beyer	Junior Project Talk	Coffey	Blue
Ariya Wilkerson	Intermediate Project Talks	Coffey	Champion
Shayna Rodgers	Intermediate Project Talks	Coffey	Reserve Champion
Clarie Haddock	Junior Demo / Illustrated Talk	Coffey	Blue
Conner Short	Junior Demo / Illustrated Talk	Coffey	Blue
Wyatt Hoag	Intermediate Demo/ Illustrated Talk	Coffey	Blue
Taryn Vogts	Intermediate Demo/ Illustrated Talk	Coffey	Blue
Sage Bell	Public Speaking	Coffey	Blue
Caleb Durst	Public Speaking	Coffey	Champion
Ashdynn Lehmann	Senior Demo/Illustrated Talk	Coffey	Blue
Callum Keith	Junior - Instrumental Solo	Coffey	Blue
Alana Wolford	Junior - Vocal Solo	Coffey	Champion
Susanna & Nellie Knight	Vocal Ensemble	Coffey	Champion
Jake Leiser	Senior - Instrumental Solo	Coffey	Champion
Coffey County	Model Meeting	Coffey	Champion





K-State Animal Sciences Leadership Academy

Applications are now available for the 2024 K-State Animal Science Leadership Academy. The goal of this academy will be to further develop young leaders within the livestock industry and prepare them for a successful future in this field. The event will occur June 5-8. The four-day session will focus on increasing knowledge of Kansas' diverse livestock industry, as well as building participant's leadership skills. Twenty high school students will be selected to participate in each group based upon educational, community, and agricultural involvement, as reflected through an application process.

Coffey County Fair Preparation

DOGS: The 4-H Dog Immunization Record will be required for all dogs attending the Coffey County Fair and the State 4-H Dog Show at the State Fair. We have dog show rule books and judging guideline books in the office.

RABBIT & POULTRY EXHIBITORS: All 4-H and Open Class rabbit and poultry exhibitors are to provide their own feed and bedding throughout the duration of the Coffey County Fair. In addition, exhibitors are expected to care for their own animals throughout the duration of the Coffey County Fair.

BEEF ANIMAL STALL FEE: The type of bedding must be approved by the species superintendent. LARGE BEEF exhibitors (Market Beef, Breeding Beef, 2nd Year Bucket Calves) will be charged a \$15 stall fee to cover expenses for cedar fibers. The \$15 stall fee should be paid via cash or check made payable to the Coffey County Fair Board and is due with your pre-entries July 1st.

All animal exhibitors (excluding large Beef): Will need to provide their own approved bedding for their animals. **Bucket Calves will be determined after completion of new tie outs.**

Beef Safety Recommendation: To help avoid puncture wounds to both animals and exhibitors, it is highly recommended that a "Smart Sensation" or similar plastic toothed scotch comb be used when grooming and especially when showing beef.

Reminder...start looking for livestock sale premium buyers now! The lockers are very busy during the fair , so call to make arrangements for your animals after the sale if they aren't going home with you!

Coffey County Fair Preparation

SHEEP & MEAT GOATS (Breeding and Market):

- Ownership must be established by April 17th
- Sheep and Goat Tagging/ Weigh In- April 17, 2024, 5-7 PM, at the Fairgrounds
- Nominations for KSF/KJLS are due June 15th.
- All sheep and goats must be identified with an official USDA scrapies Premise ID Tag. Scrapies tag information will be required and must be recorded at the time of tagging
 - Federal health guidelines for Scrapie control requires that all sheep & goats be tagged with an official USDA Scrapies premise ID tag to determine the flock of origin. If you purchase animals to show, the producer should have placed a tag already. If you raise your own, you need to contact KS Dept of Agriculture to obtain premise ID number & scrapies tags.

DAIRY (Goats & Cattle)

- Ownership must be established by April 17th. Send a profile picture of the animal with a visible ear tag to the Extension Office by April 17th.

BUCKET CALF

1st year Bucket Calf

- Must be a calf born between January 1st and April 17, 2024
- 1st Year Bucket Calf Tagging: April 17, 2024 at Fairgrounds
- Must be tagged and calves are to be off of the cow within two weeks of birth.
 - **No Bull Calves at fair time!**
- Project open to enrolled project members 4-H'ers age 7-12.

2nd year Bucket Calf

- Must have been shown previous year as 4-H Bucket calf by same 4-Her
- Must have been tagged/ID'ed by March 23rd
 - Minimum requirement for consideration of the "overall bucket calf" award is that a live, properly tagged, identified and entered bucket calf must be exhibited. In the case of calf death and inability to exhibit a live calf an educational notebook may be entered as the exhibit. The 4-Her may participate in the interview and testing process without consideration for the bucket calf exhibit award.

SWINE (Breeding & Market)

- Must be identified and ownership established by April 24th
- Swine Tagging: April 24, 2024, 5-7PM at the Fairgrounds
- Nominations due June 15th for Kansas State Fair/KJLS. Registration papers are required for all purebred hogs at both shows.

K-STATE
Research and Extension



4-H SUMMER CAMP



**FUN & CREATIVE
OUTDOOR ACTIVITIES
FOR BOYS & GIRLS
7-13 YEARS OLD**

Date:
**JUNE 18-20
2024**

Registration:
**OPEN
APRIL 3RD**

Admission
\$75

Activities

- ✓ Kayaking
- ✓ Archery
- ✓ Drawing & painting
- ✓ Swimming
- ✓ Walking nature trails

Eisenhower State Park

Melvern Lake
Osage County, Ks

Registration Link

Coming Soon!

KAYAKING

ARCHERY

More Information 620-364-5313 Extension Office



Looking Ahead...

Dates are subject to change!

April

- April 3 | Coffey County 4-H Camp Registration Opens
- April 15 | Applications due for K-State Animal Sciences Leadership Academy
- April 17
 - Breeding heifers and cow/calf pairs ID due
 - Sheep + Goat + Bucket Calf weigh in at fairgrounds - 5-7pm
 - **Spring Show Clean-Up**
- April 20 | DNA Envelope order due for Market Beef
- April 24 | Swine weigh in at fairgrounds - 5pm-7pm
- April 27
 - Spring Show in Burlington
 - 4-H Shutterbug Photography Workshop in Wichita, Ks

May

- May 1
 - **FINAL** day to add or drop projects for the 4-H portion of the Coffey County Fair
 - State Nominations for Market Beef Due
 - Coffey County 4-H Camp Registration Closes
- May 5 | Last day to register for Discovery Days
- May 6 | 4-H Shutterbug Photography Workshop in Garden City
- May 25
 - Swine Spring Show in Burlington
 - Last day for Walk Kansas program

June

- June 1
 - Rabbit ID & Horse ID Due
 - Club Fundraisers due to 4-H Council
- June 5 | DNA Envelope order due for small livestock and commercial heifers
- June 5-7 | Kansas State Discovery Days
- June 5-8 | K-State Animal Sciences Leadership Academy
- June 15 | State Nominations due for small livestock and commercial heifers
- June 18-20 | 4-H Camp at Eisenhower State Park
- June 24 | Leader Meeting - 6pm, 4-H Council Meeting - 7:30 pm, Ambassador Meeting to follow
- June 25 | Area Judging Contest in Emporia
- June 27 | Area Livestock Judging Contest - Location is TBA

July

- July 1 | 4-H Pre-Entry Deadline
- July 12 | Demo Days + Judging contests in Burlington
- July 17 | 4-H Fair Entry Deadline for static projects
- July 20 | Style Revue, Construction Judging, Fiber Arts Judging, and Pet Show
- July 23 | Rabbit Show + Horse Show in Burlington
- July 24-28 | Coffey County Fair

August

- August 1 | Registration deadline for Livestock Sweepstakes
- August 10 | Kansas 4-H Horticulture Judging Contest
- August 17-18 | Kansas Livestock Sweepstakes

September

- September 6-15 | Kansas State Fair, Hutchinson



Coffey County Office

225 Cross Street
Burlington, KS 66839

(620)-364-5313

<https://www.coffey.k-state.edu/>

Jill Barnhardt

Agriculture & Natural Resources Agent

4-H Agent

jbarnhardt@ksu.edu

Hali Spielman

Office Professional

halib@ksu.edu

Facebook:

www.facebook.com/coffeycountyextension/

Kansas State University Agricultural Experiment Station and Cooperative Extension Service

Kansas State Research and Extension is an equal opportunity provider and employer.

Accommodations:

K-State Research and Extension is committed to providing equal opportunity for participation in all programs, services, and activities. Accommodations for persons with disabilities may be requested by contacting Jill two weeks prior to the start of the event at 620-364-5313. Requests received after this date will be honored when it is feasible to do so.